

State of Wyoming Corner Record

(In compliance with the CORNER PERPETUATION AND FILING ACT, Wyoming Statutes, 1977,
Section 36~11~101, et seq., and the Rules and Regulations of the Board of Registration for Professional
Engineers and Professional Land Surveyors)

The reverse side of this form may be used if more space is needed.

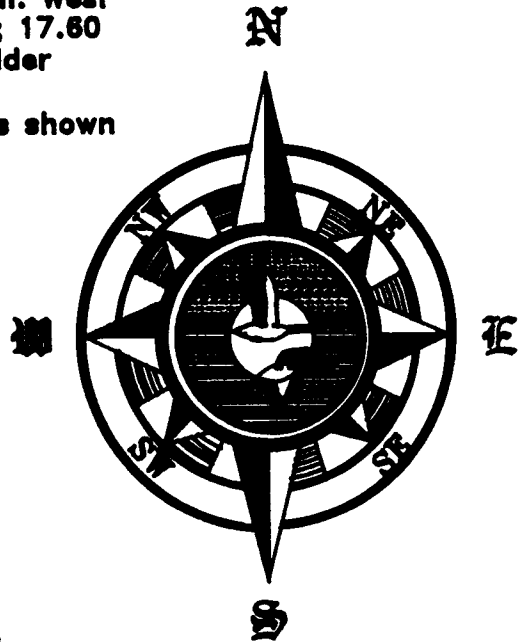
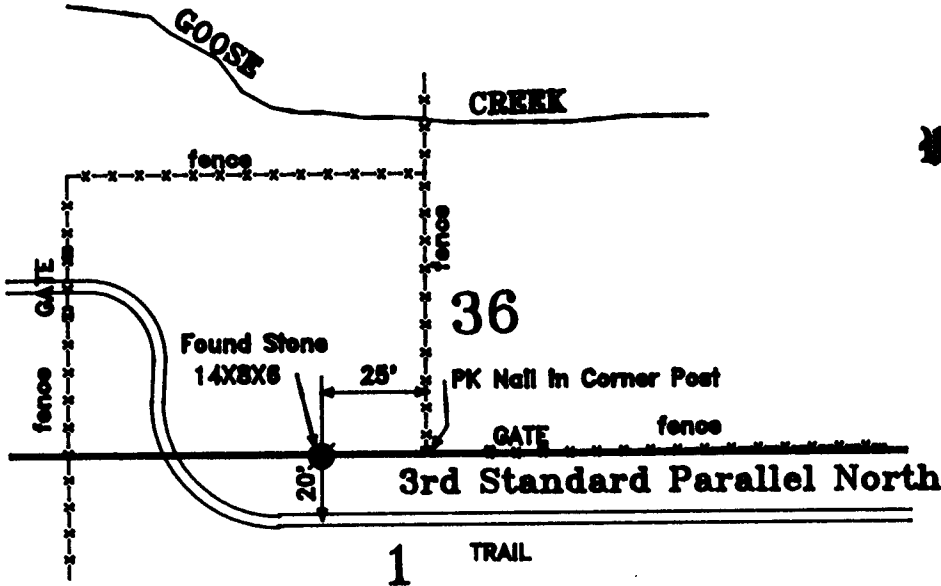
The Record of the original survey and the citation of the source of the historical information (if the corner is lost or obliterated). The description of the corner monument evidence as found and/or the monument and it's accessories as established to perpetuate the location of this corner. A sketch of the relative location of this Monument, accessories, and reference points with the course and distances to adjacent corner (s) (if determined during this Survey). The Method and Rationals used for the reestablishment of lost and obliterated corner.

GLO: "I do hereby certify that the above Diagram of the West boundary of T.12 N. R.69 W. and of the 3rd Correction Line Ranges 65,66,67,68 & 69 West of the 6th Principal Meridian in Colorado, as surveyed by William Ashley under his contract dated June 20th 1867 ...is in strict conformity with the approved field notes on file in this office"

Surveyor General's Office, Denver Colorado Territory, June 7th 1870

The above verbage was taken from the Survey Map of the 3rd Standard Parallel North from which this corner was set to wit: West between Sections 1 & 36 of the 12th & 13th Range 68 West; 17.60 chains, Dry run course South; 40.00 chains, Set Granite Boulder 14"X8"X8" for 1/4 Section Corner"

FOUND stone well set with a cairn of stones. Referenced as shown hereon.



Date of Field Work: APR 2000 Office Reference: DUCK CREEK

Cross Index Diagram

T.13 N. R.68 W. of the 6th P.M.

	1	2	3	4	5	6	7	8	9	10	11	12	13	14	15	16	17	18	19	20	21	22	23	24	25
A																									
B																									
C																									
D																									
E																									
F																									
G																									
H																									
I																									
J																									
K																									
L																									
M																									
N																									
O																									
P																									
Q																									
R																									
S																									
T																									
U																									
V																									
W																									
X																									
Y																									
Z																									

3rd Standard Parallel North

Firm/Agency, Address
Terrestrial Surveying & Mapping Co.
"Your Friendly Neighborhood Surveyor"
 1127 Terry Ranch Road
 Cheyenne, Wyoming 82007
 Telephone Number: (307) 634-9360

This Corner Record was prepared by me or under my direction and supervision.

SEAL & SIGNATURE



Z~23

Corner Name: 1/4 Section: 36 T.13 N. R.68 W. 6th P.M. Cross Index No.

GCDB: 640100